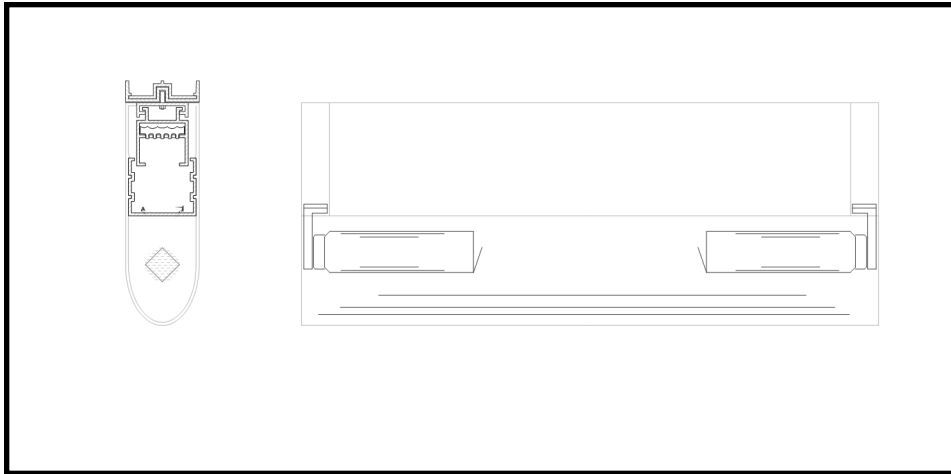


TEAR DROP AIR FOIL LUMINARIES



TD SERIES

Isolation Systems, Inc. offers this teardrop fluorescent luminaire for installation directly below HEPA-filtered laminar flow sources. This luminaire allows laminar air streams to pass over its housing without air-flow disruption. Specifically designed for installation below our FFU and CVLF Series ceiling-mounted filtration units. This product enables full filter coverage within your clean area while providing full illumination below. Fabricated of 20 ga. CRS with white polyurethane finish, its component housing is fully sealed. Our teardrop luminaire will provide contaminant-free lighting for your full laminar flow environment. This product has been manufactured to the highest quality standards, and we assure your satisfaction.

Thank you for considering **Isolation Systems, Inc.** for your airborne contamination control needs.

STANDARD FEATURES:

- Die form 20 ga. CRS with white polyurethane finish.
- Teardrop-shaped, formed plastic diffuser smoothed to room.
- Ballast-rapid start-HPF, CBM/ETL-Class P energy saving.

OPTIONAL FEATURES:

- 100% 304 or 316 stainless steel construction with #4 finish.

NOTES:

- This system meets or exceeds standards as specified in Fed. Std. 209 E and IES-RP-CC-002.
- **Isolation Systems, Inc.** inspection reports available upon request.
- Approval drawings available upon request.

MODEL #	LAMPS	VOLTAGE	DIMENSIONS
TD-12-FM	120	115/277	24" long
TD-14-FM	140	115/277	48" long

All information herein is subject to change without notice.

all catalog dimensions are nominal.



Revised 11/2015