

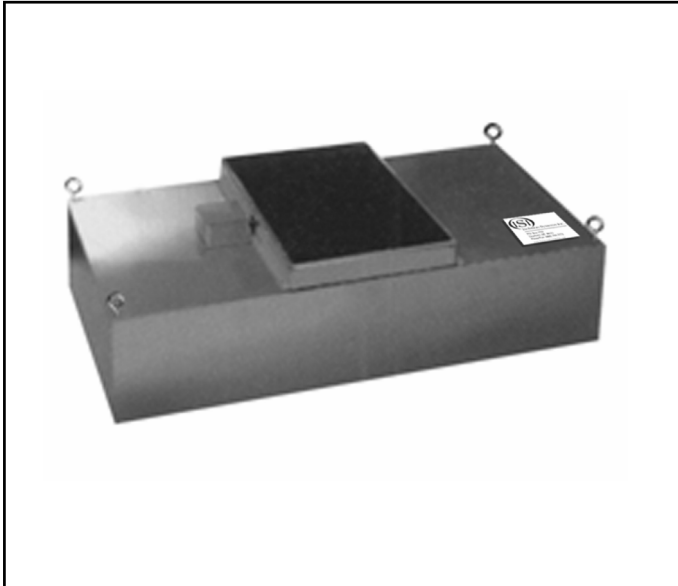
MODULAR FAN FILTER UNIT

FFU SERIES

Isolation Systems, Inc.'s FFU series has been designed and engineered with careful attention to user needs, based upon our extensive market research and industry expertise. Our FFU series performs at peak efficiency throughout the recommended life of its filter. With an overall weight of 50 lbs. it is one of the lightest units manufactured. Our exclusive **AIR DIFFUSION SYSTEM** ensures an even air flow across the entire filter face. This innovation has also enabled us to reduce generated sound levels, making our unit the quietest in the industry.

Our FFU series is offered in three sizes, increasing its adaptability to specific process applications and customer needs. This product has been manufactured to the highest quality standards, and we assure your satisfaction with its performance.

Thank you for considering **Isolation Systems, Inc.** for your airborne contamination control needs.



STANDARD FEATURES

- Unit construction: anodized aluminum filter frame with .060 aluminum blower motor housing lined with sound attenuating material.
- HEPA filtration 99.99% efficient @ .3 microns.
- Protective powder-coated screen for HEPA filter face.
- Knife-edge to gel seal to prevent air bypass between motor housing and filter frame.
- Integral eye hooks for ceiling suspension.
- Pre-filtration through 30% efficient disposable fiberglass filters.
- Easy access for electrical hookup.

OPTIONAL FEATURES

- 100% 304/316L stainless steel construction with #4 finish blower motor housing.
- ULPA filtration 99.9995% efficient @ .12 microns.
- Blower motor speed control for velocity range adjustment.
- Aerosol challenge introduction port.
- Magnehelic gauge connection port.
- Optional voltages in 230 v 60 hz 1 ph, and 277 v 60 hz 1 ph (50 hz motor rating also available).
- AC ionization grid power pack.
- DC ionization pulse bar type with power pack.

NOTE:

- All filters are PSL challenged at factory to insure media integrity. Certificates of conformance are available upon request.
- Unit performance meets or exceeds standards as specified in Fed. Std. 209E and IES-RP-CC-002.
- All electrical components are UL listed.
- All electrical wiring is in conformance with NEMA standards.
- **Isolation Systems, Inc.** inspection reports available upon request.
- Approval drawings available upon request.

MODEL #	O.A. UNIT SIZE	STD ELECTRICAL	RATED PERFORMANCE	SHIP WT
FFU-22	23 $\frac{5}{8}$ " x 23 $\frac{5}{8}$ " x 15"	115v - 60hz - 1ph - FLA= 1.6	90 FPM +/- 20% @ 0.5 WG.	30 lb
FFU-24	23 $\frac{5}{8}$ " x 47 $\frac{5}{8}$ " x 15"	115v - 60hz - 1ph - FLA= 2.2	90 FPM +/- 20% @ 0.5 WG.	50 lb
FFU-44	47 $\frac{5}{8}$ " x 47 $\frac{5}{8}$ " x 15"	115v - 60hz - 1ph - FLA= 5	90 FPM +/- 20% @ 0.5 WG.	90 lb

*All information herein is subject to change without notice
All shipping weights are estimated.*

All catalog dimensions are nominal.

